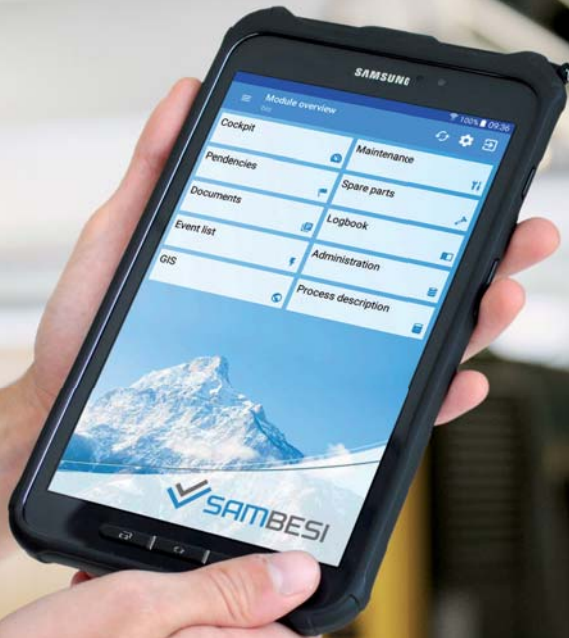




YOUR PROFESSIONAL MAINTENANCE SOFTWARE

With the operating and maintenance software
SAMBESI you keep track of your installations



*Say goodbye to paper forms.
Checklists can be easily
and conveniently processed
by smartphone or tablet.*



With **SAMBESI**,
paperless documentation.

MAINTENANCE SOFTWARE DIGITIZED

With extensive planning, management and optimization of all maintenance processes, you can increase the availability of your installations and reduce maintenance costs. A suitable maintenance software can help you with this.

SAMBESI is a professional software that helps you to control the flood of data for the entire maintenance process. You increase the availability of your installations, perform maintenance more efficiently and thus reduce costs. In addition, the know-how relating to the condition of the equipment remains within your company, accessible anytime.

With the operating and maintenance software **SAMBESI** you keep track of your equipment and report to the authorities at any time. The software shows you when and where to perform which tasks.

With **SAMBESI** Mobile, you can easily edit on-site maintenance, record measured values, and add photos. This means that you have all documents and the complete installation status at your fingertips, thanks to the mobile devices. **SAMBESI** digitizes your work processes and is therefore the ideal application for organisations of any sizes.

ADMINISTRATION

MANAGEMENT

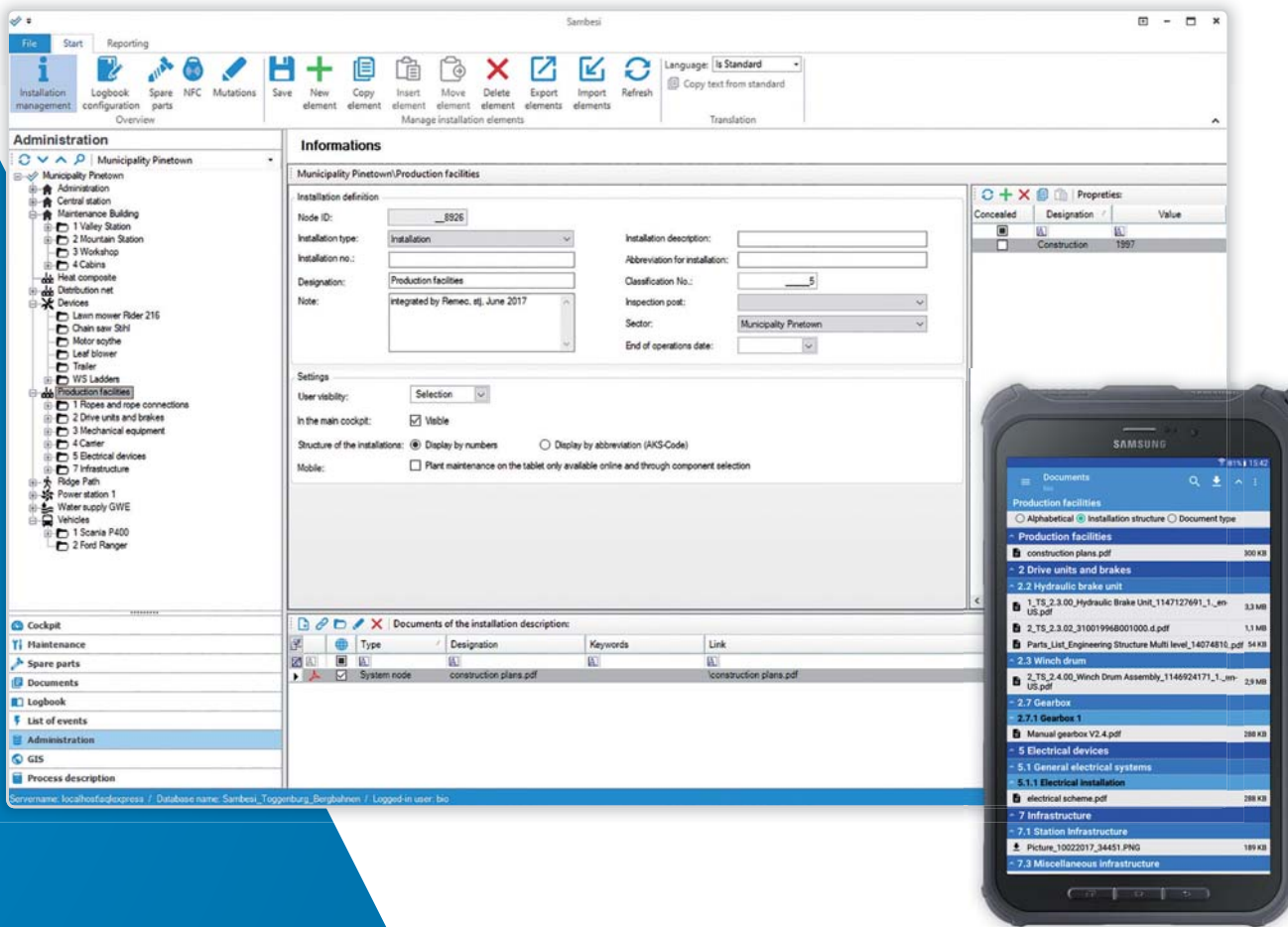
In the management of your installations you are responsible for all operations. The construction of the installation structure can be chosen to suit your requirements and adapted at any time. Our experience and extensive library from various industries enables you to efficiently record all information.

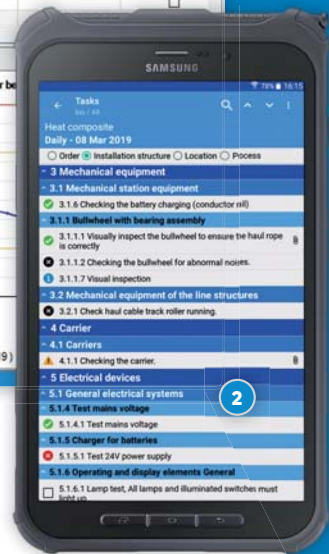
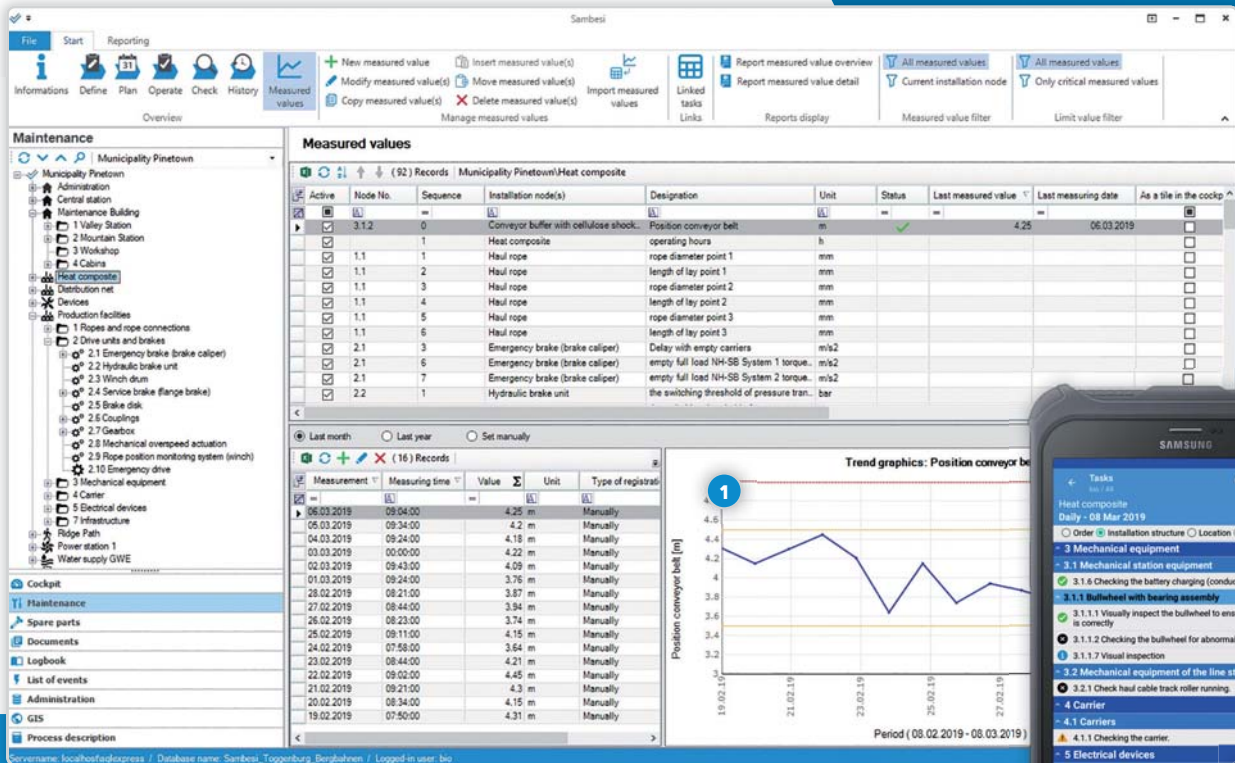
DOCUMENTS

Add documents to your installation structure. By storing operating instructions, maintenance checklists, construction plans and pictures, you can keep track of all installations.

All documents can be downloaded to the tablet and are thus also available offline.



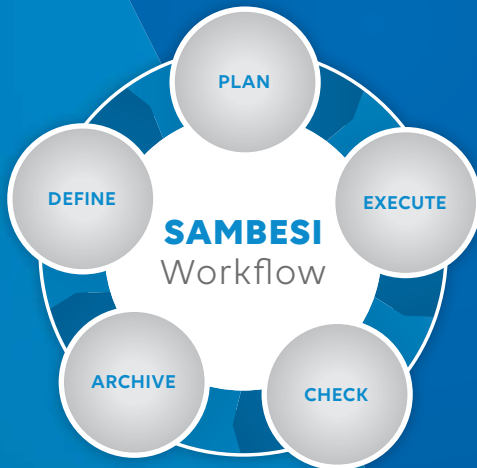




- 1 Working with measured values enables a quantitative assessment of the condition of the equipment and increases the quality of the inspections.
- 2 The checklists can be edited on the tablet.

MAINTENANCE

The maintenance of your installation is a complex and extremely demanding task. The workflow integrated in SAMBESI enables the practical fulfillment of all activities.



DEFINE

Register installations and tasks and set their maintenance strategy.

PLAN

Generate checklists and resource requirements for operation and revision phases.

EXECUTE

Execute and document checklists and tasks.

CHECK

View and check performed checklists and tasks.

ARCHIVE

Analyze and archive targeted checklists and tasks. Cost control and reporting.

LIST OF EVENTS

The recording of accidents, events and disturbances is the first step in ensuring they do not reoccur in future. Learn from history.

RECORDING

With the help of this module you can centrally record and evaluate all events around your installations. Disruptions, accidents and breakdowns are manageable and you can take measures to prevent such events.

REPORTING

SAMBESI also simplifies communication with authorities by allowing you to view and send recorded events in pre-integrated, official forms.

The screenshot displays the Sambesi software interface. On the left is a tree view of the installation hierarchy, including 'Municipality Pinetown', 'Administration', 'Central station', and various equipment like 'Control General', 'Switchgears', 'Buildings', 'Production', 'Maintenance Building', 'Heat composite', 'Devices', 'Lawn mower', 'Chain saw', 'Motor sythe', 'Leaf blower', 'Trailer', 'WVS Ladders', 'Production facilities', 'Ropes and rope connections', 'Drive units and brakes', 'Mechanical equipment', 'Caster', 'Electrical devices', and 'Infrastructure'. The main window shows a 'List of events' table with columns for Date of event, Event time, Event type, Installation node(s), Course of events, Cause, and Measures taken. A red circle with the number '1' highlights a specific event entry. On the right, a 'Disturbance report' window is open, showing details for an 'Accident and disruption report' on 2/8/2018 at 15:20. The report includes fields for Status (New), Component (Distribution net), Date, Occurrence of the event (During operating hours), Service interruption by (2/8/2018 15:20 to 2/8/2018 15:59), Course of events (Complete brake on the production), Cause (operator error), Measures taken (reboot and warning to the operator), and Contact person (Peter King, No. tel.: 0415463421). A red circle with the number '2' highlights the 'Course of events' field. The bottom status bar shows the server name 'localhost:5432', database name 'Sambesi_Toggenburg_Bergbahnen', and user 'bjo'.

1 An analysis of all the events of an installation and of the entire company is provided.

2 With the use of predefined reports, you can easily provide information about your installations.

Sambesi

File Start Reporting

Spare parts Stock Contacts New stock Modify stock Delete stock

Overview

Spare parts Municipality Pinetown

Municipality Pinetown

- Administration
 - Central station
 - 1 Control General
 - 2 Switchgear 6.3kV
 - 3 Switchgear 15kV
 - 4 Rople control
 - 5 Buildings
 - 6 Production
- Maintenance Building
 - Heat composite
 - Distribution net
- Devices
 - Lawn mower Rider 216
 - Chain saw Stihl
 - Motor scythe
 - Leaf blower
 - Trailer
 - WS Ladders
- Production facilities
 - 1 Ropes and rope connections
 - 2 Drive units and brakes
 - 3 Mechanical equipment
 - 4 Center
 - 5 Electrical devices
 - 7 Infrastructure
- Ridge Path
 - Power station 1
 - Water supply GWIE

Cockpit

Maintenance

Spare parts

Documents

Logbook

List of events

Administration

GIS

Process description

Stock

(8) Records

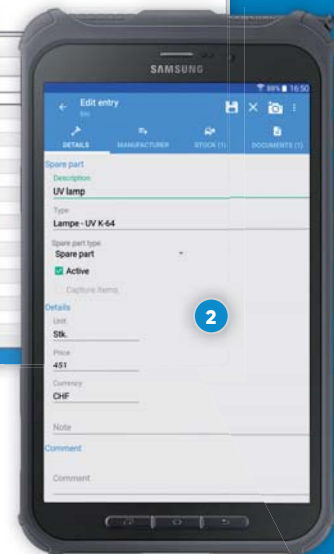
Code	Designation	Contact name	Comments
10	Central station		
15	Production hall		
20	Administration		
30	Maintenance workshop		
31	Main building workshop		
40	DUI workshop		
50	Power station 1		
70	Carpark		

(20) Records | Spare parts in stock: Maintenance workshop

Manufacturer	Article No.	Designation	Manufacturer	Current stock	Storage location	Spare part type	Supplier	Unit
G130	353.001	Labels	Pago Etiketten			Consumables	Pago Etiketten	Sik
83401		UV lamp	Heusser Vitler Sol.			Spare part	Heusser Vitler.	Sik
23003989		grout	Garaventa AG			Consumables	Garaventa AG	kg
		Fuel filter	SF-Filter AG			Consumables	SF-Filter AG	Sik
5441810000		intermediate shaft	Scania Schweiz AG			Spare part	Scania Schweiz.	Sik
		flame candle F 6L 913, MN: 5 1	Dentech AG (Deut.			Spare part	Garaventa AG	Sik
20704582		Section	Garaventa AG			Spare part	Garaventa AG	Sik
23028407		Filter Millil	Garaventa AG			Spare part	Garaventa AG	Sik
20802139		friction clutch	Garaventa AG	2		Spare part	Garaventa AG	Sik
01 5097 2520		bearings	Angst and Pfister	18		Spare part	Angst and Pfister	Sik
144005		Quartz protection tube D 24	Heusser Vitler Sol.			Spare part	Heusser Vitler.	Sik
G130 352.001		Labels	Pago Etiketten			Consumables	Pago Etiketten	Sik
G130 353.001		Labels	Pago Etiketten			Consumables	Pago Etiketten	Sik
G130 348.001		Labels	Pago Etiketten			Consumables	Pago Etiketten	Sik
809510		Plasticlas cover to roof hatch 71	Chiv.	3		Spare part	Chiv.	Sik
32998		UV lamp	Heusser Vitler Sol.			Spare part	Heusser Vitler.	Sik
220 5008		propellant	Simatec ag	20		Spare part	Simatec ag	Sik
		Kohlenbürsten V101X / Zxl.	Kolb Protec AG			Spare part	Kolb Protec AG	Sik

Servername: localhost:8080 / Database name: Sambesi_Toggenburg_Bergbahnen / Logged in user: bio

- 1 Spare parts can be assigned directly to the installation structure.
This simplifies the planning of replacement material during revision work.
- 2 Spare parts can be conveniently recorded and managed on the tablet.
During repairs you can easily document your work.



SPARE PARTS

Spare parts management helps you to use your resources efficiently, makes it easy to predict the material required for maintenance and enables you to verify the components used.

STOCK MANAGEMENT

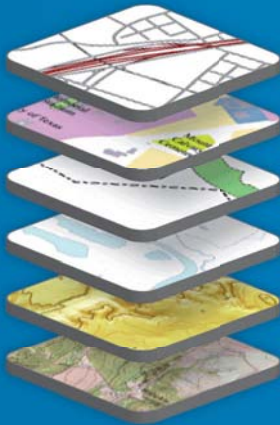
Spare parts can be assigned to warehouses and stock levels managed. The management of inventory becomes easy. You can also enter the manufacturers contact information, so that they are always accessible.

MAINTENANCE

You can enter spare parts directly when performing maintenance tasks. These spare parts are debited directly from the respective storage location.

GIS

Fully integrated in SAMBESI, geodata can be displayed and managed. In addition to intelligent document management, you also have access to public information from government agencies.



LAYER CONCEPT

The various data sources can easily be switched on and off as individual layers. Access to the public data takes place online. On request, we can digitize and host GIS data for you.

- **Installations (shafts, wells, reservoirs, pipes)**
- **Layer of authorities (properties, hunting grounds, permafrost maps)**
- **Aerial view / maps**



PROCESS DESCRIPTION

Process description

3.6 SPB.107: Organisation insurance obligation

The finance and human resources department is responsible for the insurance. This is done together with an insurance broker at senior management level. The insurances are controlled and renegotiated annually.

Responsible				Process flowchart	Input	Tasks, activities, Descriptions, tools	Output
E	D	M	I				
				<pre> graph TD Start([SPB.107 Organisation insurance]) --> Check[Check insurance] Check --> Decision{Changes needed} Decision -- yes --> Conclude[Conclude new insurance] Decision -- no --> End([End]) </pre>	existing insur- ance, annually	Insurance checks on term, pre- miums	Decision bases
CEO			TL		Basis for deci- sions	Decide if adjustment needed	decision
					Insurance requi- rements	Complete or adjust insurance	insurance policies

Servername: kachhofhof@desysa / Database name: Sambesi_Teggenburg_Berghofen / Logged in user: bee

The module Process description brings order to your document structure as a management tool, clarifies responsibilities and enables you to electronically map your business processes.

COCKPIT

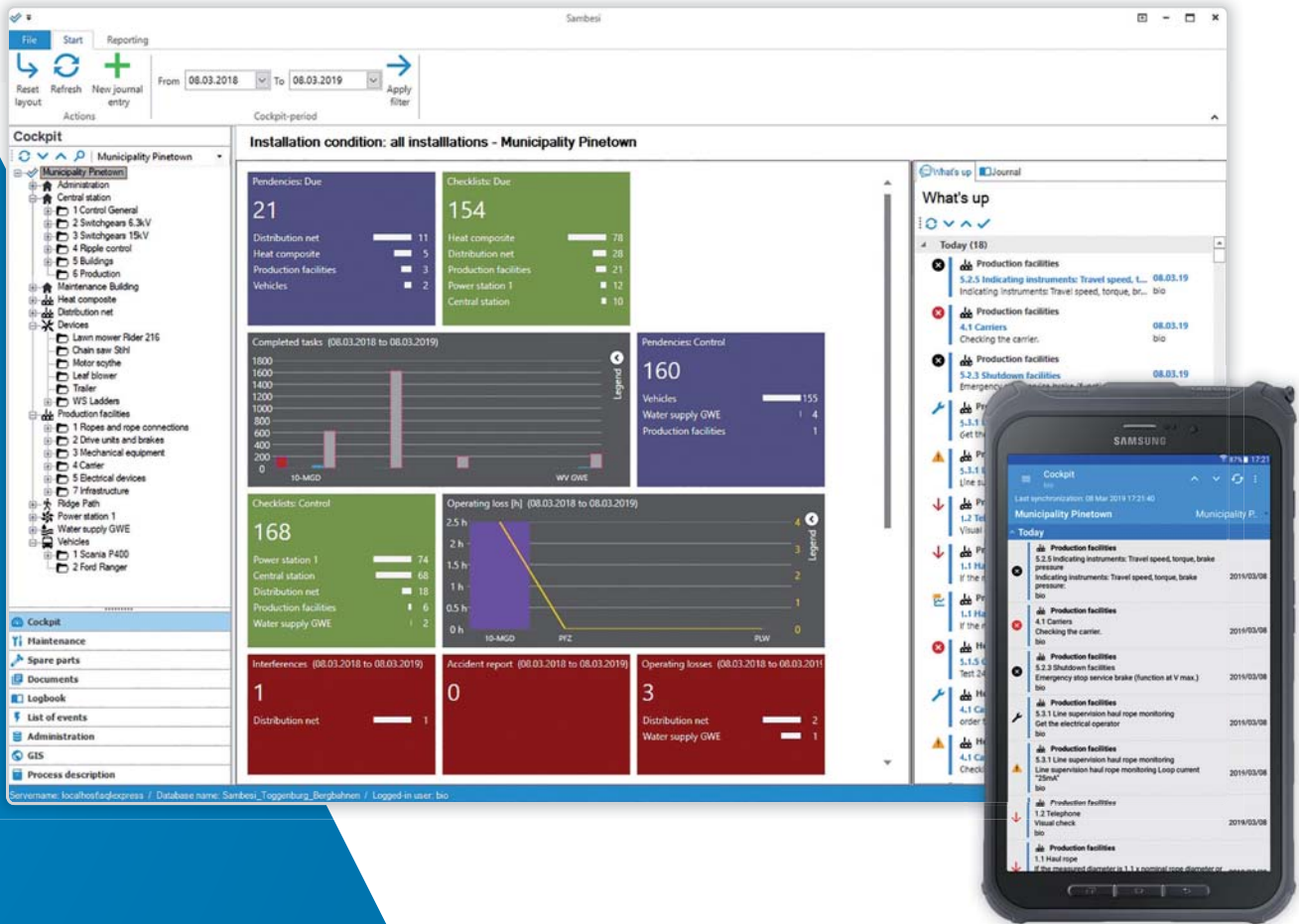
The cockpit provides you with all relevant installation data at a glance. Keep pending trends, pending checklists, disturbances and important metrics under control.

INSTALLATION STATE

The Cockpit module provides an overview of the installation status. The tiles can be placed freely and switched on or off. With one click, you can easily switch to the detailed view of the corresponding module.

MEASURED VALUES

The most important measured values can be displayed and monitored. Limit overruns are signaled immediately and you can navigate to the details of the measured values with one simple click.





STAY UPDATED REGARDING TECHNOLOGY!

Your advantages with SambesiMobile

- Data collection for maintenance and events takes place directly on site.
- Use of offline mode possible as automatic synchronization takes place once system is online.
- Better employee management with optimized checklists, grouped by service, process or location.
- Information always available and accessible at any location (schemes, plans, pictures).
- Minimization of paperwork and administration.
- Encourage the motivation of employees by using modern technologies.
- Easy handling of complex installations thanks to **NFC** identification.



Headquarters Switzerland

Remec AG
Bahnhofstrasse 69
CH-6460 Altdorf
Telephone +41 41 500 39 11
www.remec.ch

Representation Austria

Remec AG
Unterwasser 37
A-6384 Waidring
Telephone +43 650 919 82 19
www.remec.eu

